

# Control of the cylinder wake in the laminar regime by Trust-Region Proper Orthogonal Decomposition.

Laurent CORDIER

Michel BERGMANN & Jean-Pierre BRANCHER

`Laurent.Cordier@ensem.inpl-nancy.fr`

Laboratoire d'Énergétique et de Mécanique Théorique et Appliquée

UMR 7563 (CNRS - INPL - UHP)

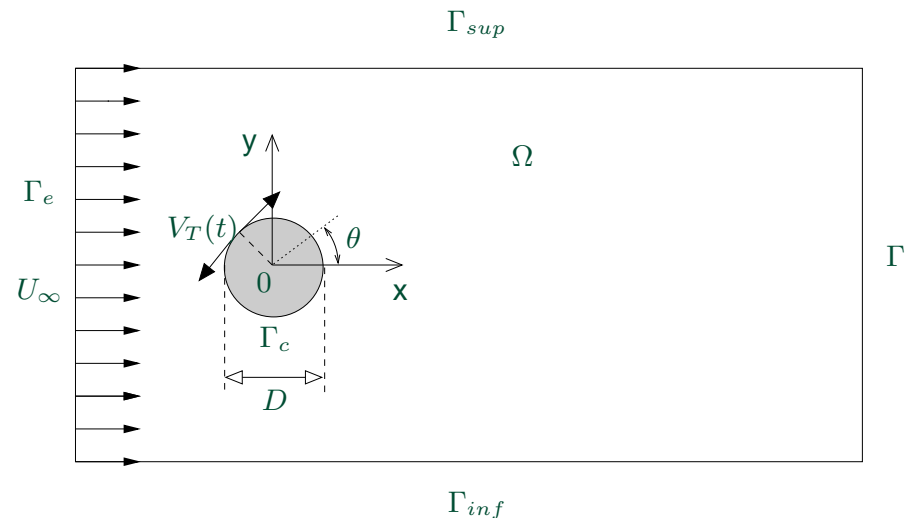
ENSEM - 2, avenue de la Forêt de Haye

BP 160 - 54504 Vandoeuvre Cedex, France



- Two dimensional flow around a circular cylinder at  $Re = 200$
- Viscous, incompressible and Newtonian fluid
- Cylinder oscillation with a tangential sinusoidal velocity  $\gamma(t)$

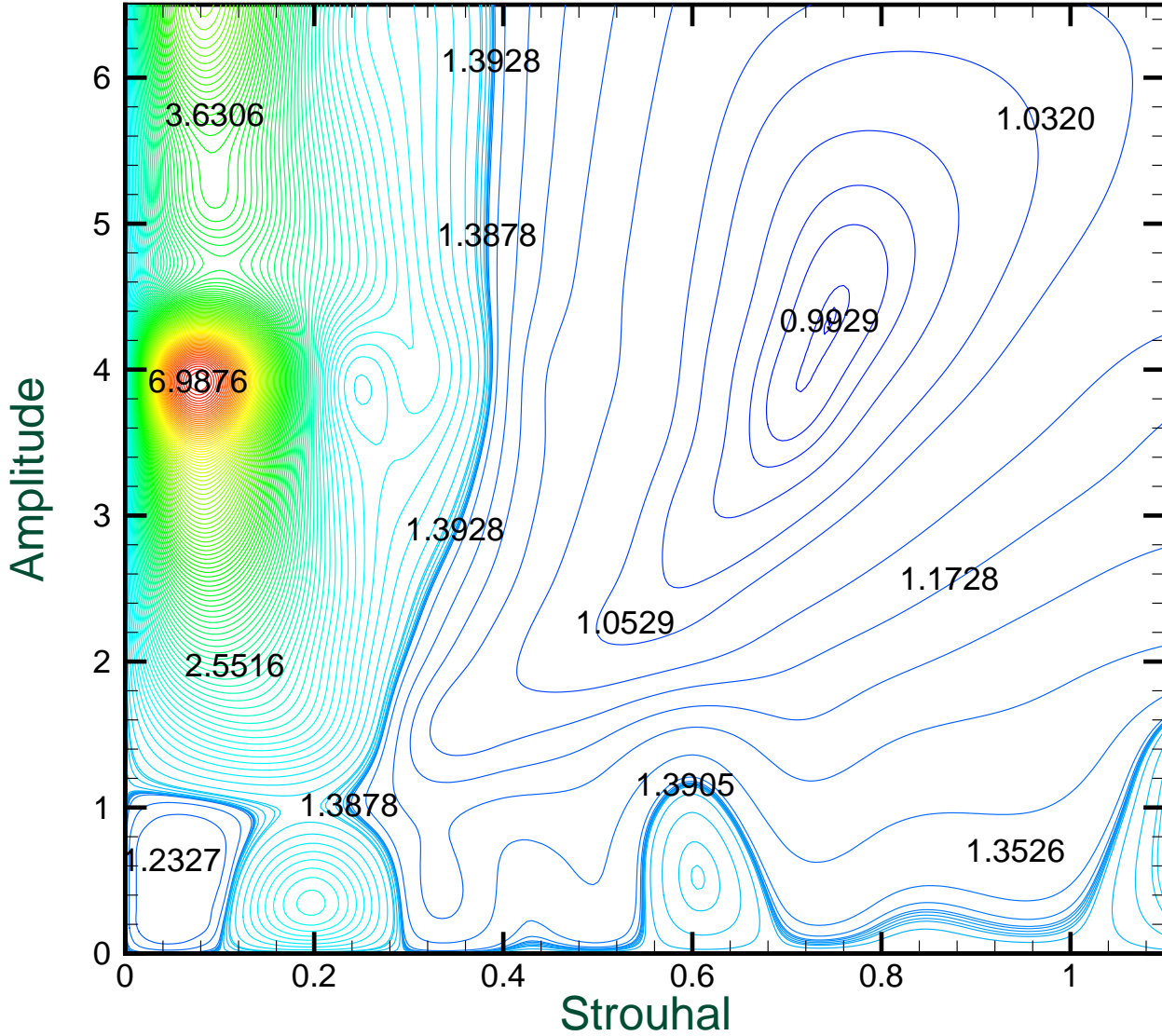
$$\gamma(t) = \frac{V_T}{U_\infty} = A \sin(2\pi St_f t)$$



**Find the control parameters  $c = (A, St_f)^T$  such that the mean drag coefficient is minimized**

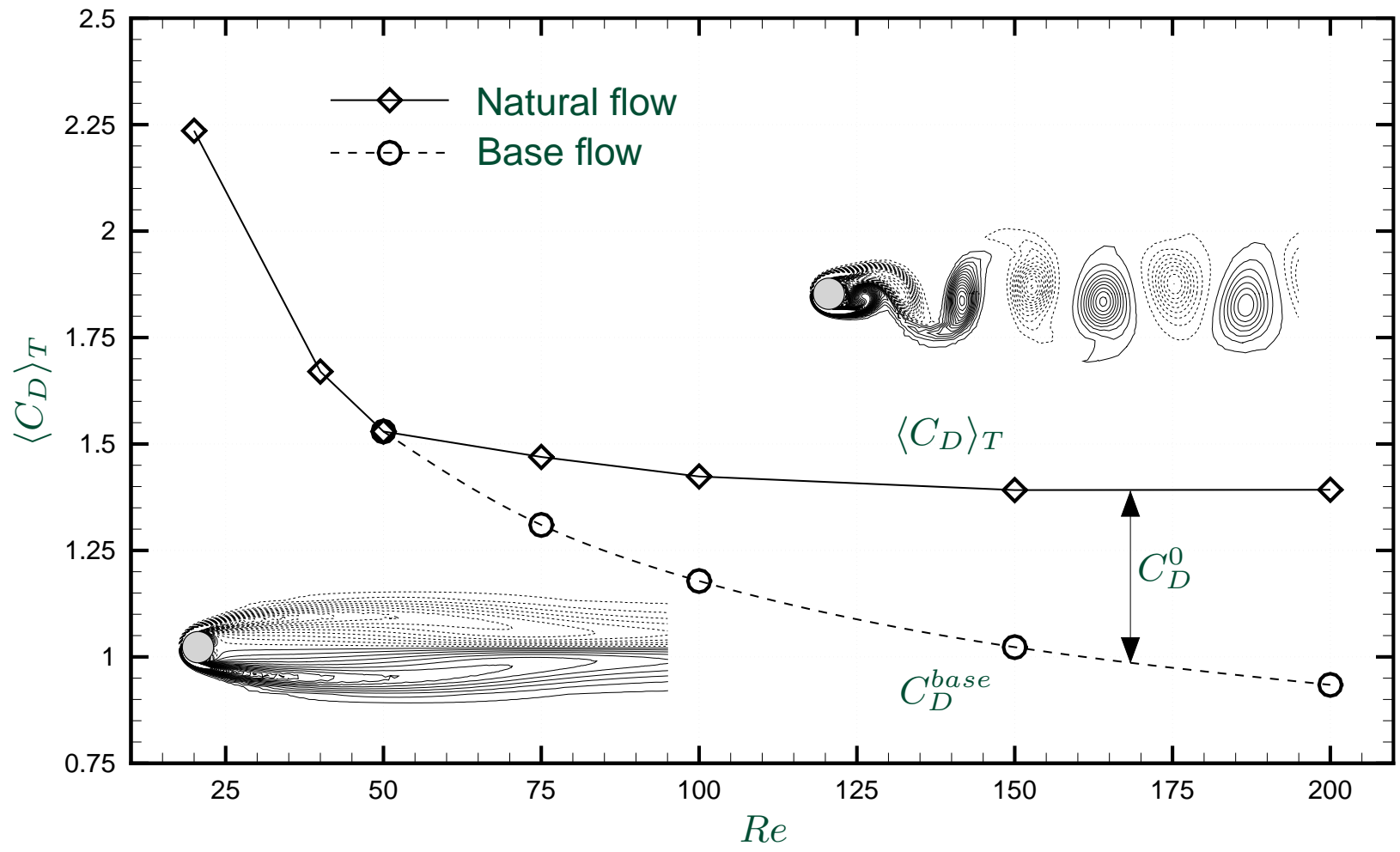
$$\langle C_D \rangle_T = \frac{1}{T} \int_0^T \int_0^{2\pi} 2 p n_x R d\theta dt - \frac{1}{T} \int_0^T \int_0^{2\pi} \frac{2}{Re} \left( \frac{\partial u}{\partial x} n_x + \frac{\partial u}{\partial y} n_y \right) R d\theta dt,$$





Variation of the mean drag coefficient with  $A$  and  $St_f$ .  
Numerical minimum  $(A_{min}, St_{f_{min}}) = (4.3, 0.74)$ .



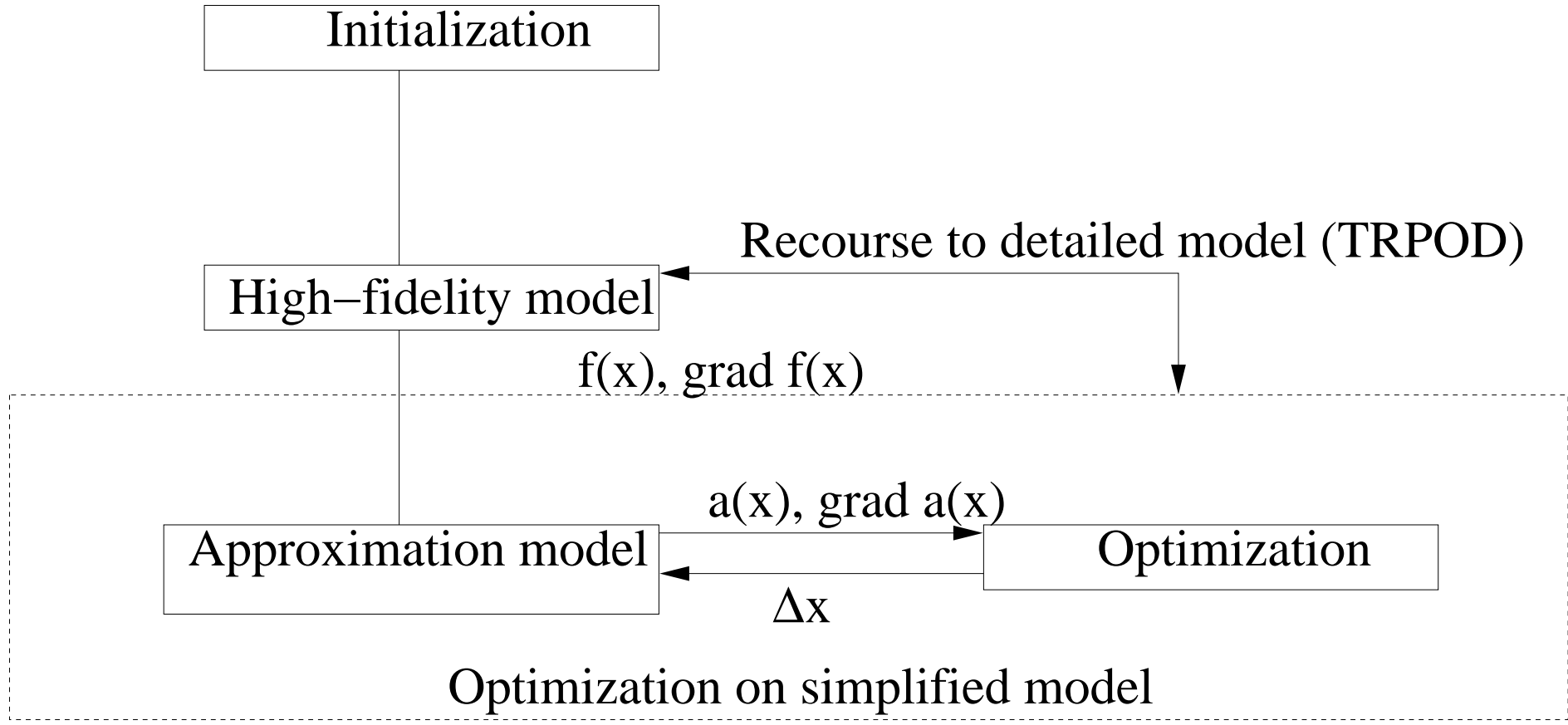


**Fig. :** Variation with the Reynolds number of the mean drag coefficient. Contributions and corresponding flow patterns of the base flow and unsteady flow.

Protas, B. et Wesfreid, J.E. (2002) : Drag force in the open-loop control of the cylinder wake in the laminar regime. *Phys. Fluids*, **14**(2), pp. 810-826.



# Reduced Order Model (ROM) and optimization problems



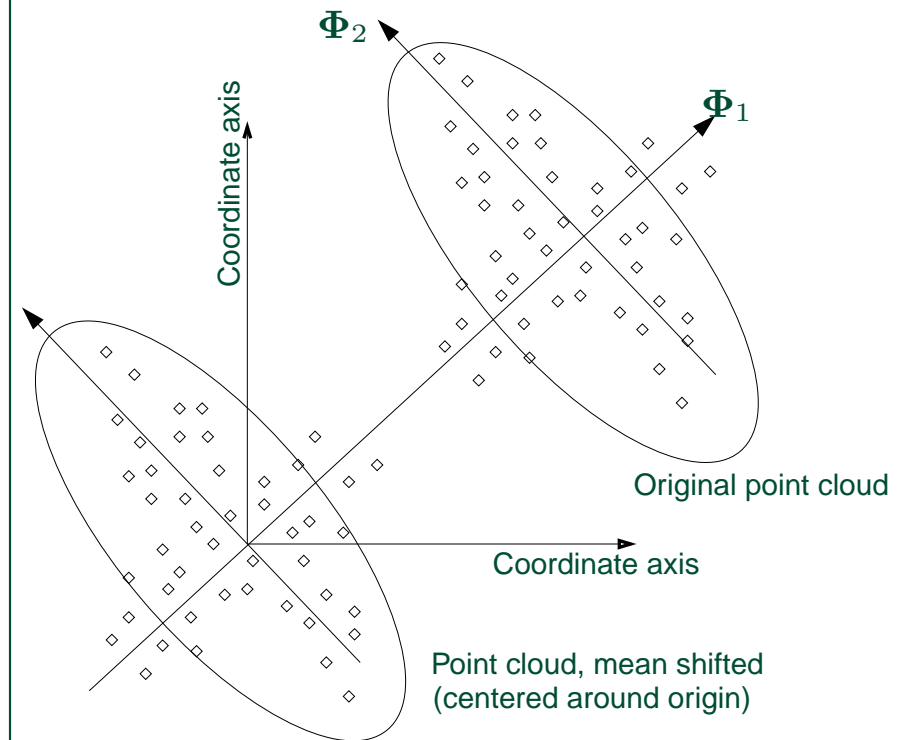
- ▶ Introduced in turbulence by Lumley (1967).
- ▶ Method of information compression
- ▶ Look for a realization  $\Phi(\mathbf{X})$  which is closer, in an average sense, to realizations  $\mathbf{u}(\mathbf{X})$ . ( $\mathbf{X} = (\mathbf{x}, t) \in \mathcal{D} = \Omega \times \mathbb{R}^+$ )
- ▶  $\Phi(\mathbf{X})$  solution of the problem :

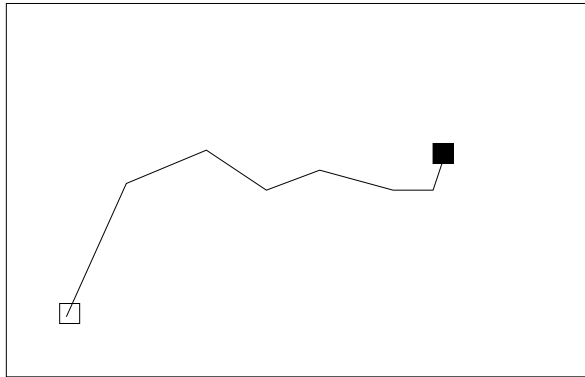
$$\max_{\Phi} \langle |(\mathbf{u}, \Phi)|^2 \rangle \quad \text{s.t.} \quad \|\Phi\|^2 = 1.$$

- ▶ Snapshots method, Sirovich (1987) :

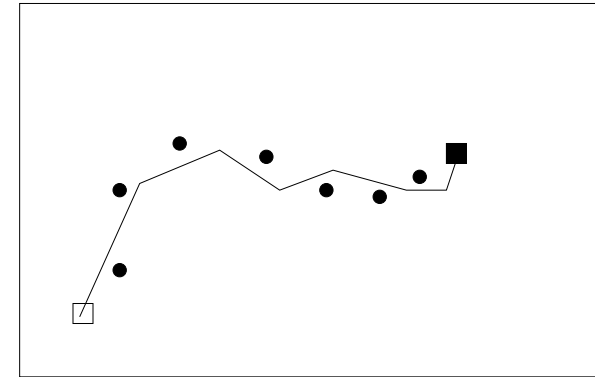
$$\int_T C(t, t') a^{(n)}(t') dt' = \lambda^{(n)} a^{(n)}(t).$$

- ▶ Optimal convergence in  $L^2$  norm (energy) of  $\Phi(\mathbf{X})$
- ⇒ Dynamical order reduction is possible.

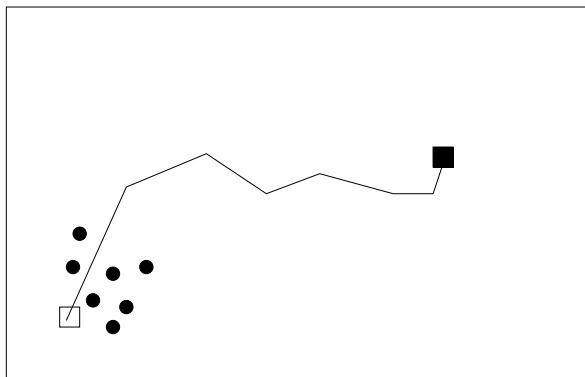




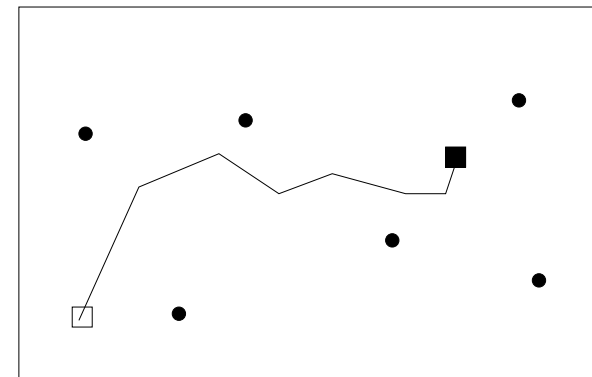
General configuration.



Ideal sampling.



Unsuitable sampling.



Unsuitable sampling.

Discussion of parameter sampling in an optimization setting (from Gunzburger, 2004).

— path to optimizer using full system, □ initial values, ■ optimal values, and • parameter values used for snapshot generation.



- Necessity for a given reference flow to introduce new modes : either new operating conditions or shift-modes

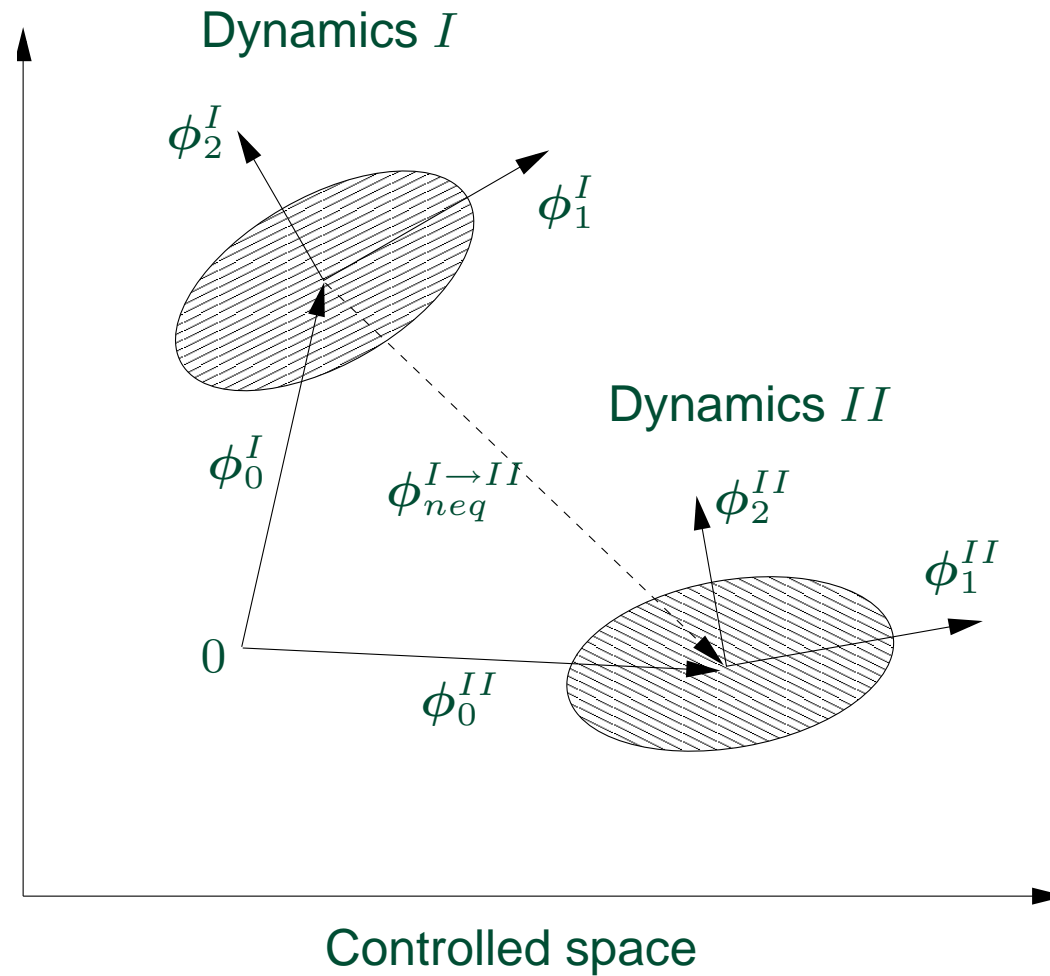


Fig. : Schematic representation of a dynamical transition with a non-equilibrium mode





► POD approximations consistent with our approach :

$$\mathbf{U}(\mathbf{x}, t) = (u, v, p)^T = \underbrace{\sum_{i=0}^N a_i(t) \phi_i(\mathbf{x})}_{\text{Galerkin modes}} + \underbrace{\sum_{i=N+1}^{N+M} a_i(t) \phi_i(\mathbf{x})}_{\text{non-equilibrium modes}} + \underbrace{\gamma(\mathbf{c}, t) \mathbf{U}_c(\mathbf{x})}_{\text{control function}}$$

Physical aspects	Modes	Dynamical aspects
<b>actuation mode</b>	$U_c$	predetermined dynamics
<b>mean flow mode</b>	$U_m, i = 0$	$a_0 = 1$
<b>Galerkin modes</b> Dynamics of the reference flow $I$	$i = 1$	<b>POD ROM</b> Temporal dynamics of the modes (eventually, the mode $i = 0$ is solved then $a_0 \equiv a_0(t)$ )
	$i = 2$	
	$\dots$	
	$i = N$	
<b>non-equilibrium modes</b> Inclusion of new operating conditions $II, III, IV, \dots$	$i = N + 1$	
	$\dots$	
	$i = N + M$	



- Galerkin projection of *NSE* onto the POD basis :

$$\left( \phi_i, \frac{\partial \mathbf{u}}{\partial t} + \nabla \cdot (\mathbf{u} \otimes \mathbf{u}) \right) = \left( \phi_i, -\nabla p + \frac{1}{Re} \Delta \mathbf{u} \right).$$

- Reduced order dynamical system where only  $(N + M + 1)$  ( $\ll N_{POD}$ ) modes are retained (state equations) :

$$\begin{aligned} \frac{d a_i(t)}{d t} &= \sum_{j=0}^{N+M} \mathcal{B}_{ij} a_j(t) + \sum_{j=0}^{N+M} \sum_{k=0}^{N+M} \mathcal{C}_{ijk} a_j(t) a_k(t) \\ &\quad + \mathcal{D}_i \frac{d \gamma}{d t} + \left( \mathcal{E}_i + \sum_{j=0}^{N+M} \mathcal{F}_{ij} a_j(t) \right) \gamma(\mathbf{c}, t) + \mathcal{G}_i \gamma^2(\mathbf{c}, t), \\ a_i(0) &= (\mathbf{U}(\mathbf{x}, 0), \phi_i(\mathbf{x})). \end{aligned}$$

$\mathcal{B}_{ij}$ ,  $\mathcal{C}_{ijk}$ ,  $\mathcal{D}_i$ ,  $\mathcal{E}_i$ ,  $\mathcal{F}_{ij}$  and  $\mathcal{G}_i$  depend on  $\phi_i$ ,  $U_c$  and  $Re$ .



# Surrogate drag function and model objective function

- Drag operator :

$$\begin{aligned} \mathcal{C}_D : \mathbb{R}^3 &\rightarrow \mathbb{R} \\ \mathbf{u} &\mapsto 2 \int_0^{2\pi} \left( u_3 n_x - \frac{1}{Re} \frac{\partial u_1}{\partial x} n_x - \frac{1}{Re} \frac{\partial u_1}{\partial y} n_y \right) R d\theta, \end{aligned} \quad (1)$$

- Surrogate drag function :

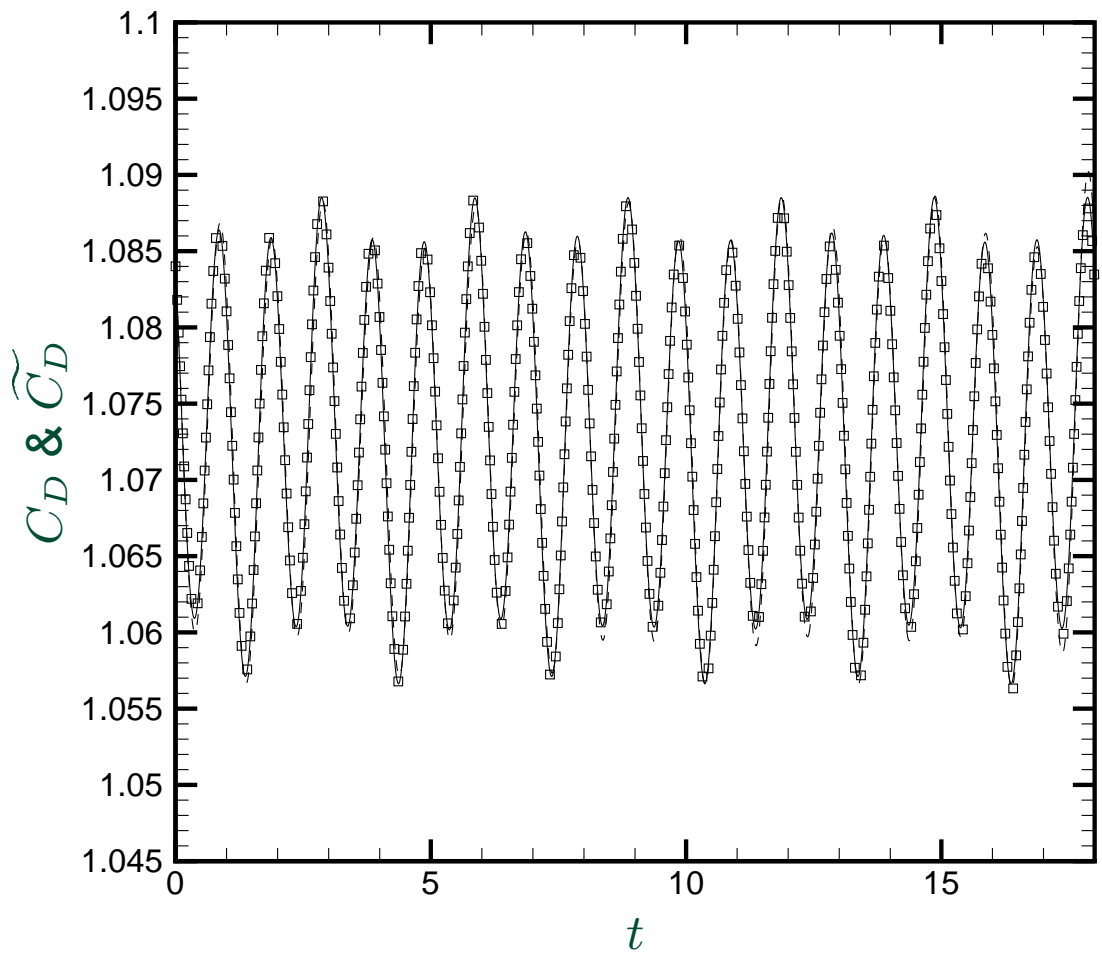
$$\begin{aligned} \widetilde{C}_D(t) = & \underbrace{a_0(t)N_0 + \sum_{i=N+1}^{N+M} a_i(t)N_i}_{\text{evolution of the mean drag}} + \underbrace{\sum_{i=1}^N a_i(t)N_i}_{\text{fluctuations } C'_D(t)} \quad \text{with } N_i = \mathcal{C}_D(\phi_i). \end{aligned}$$

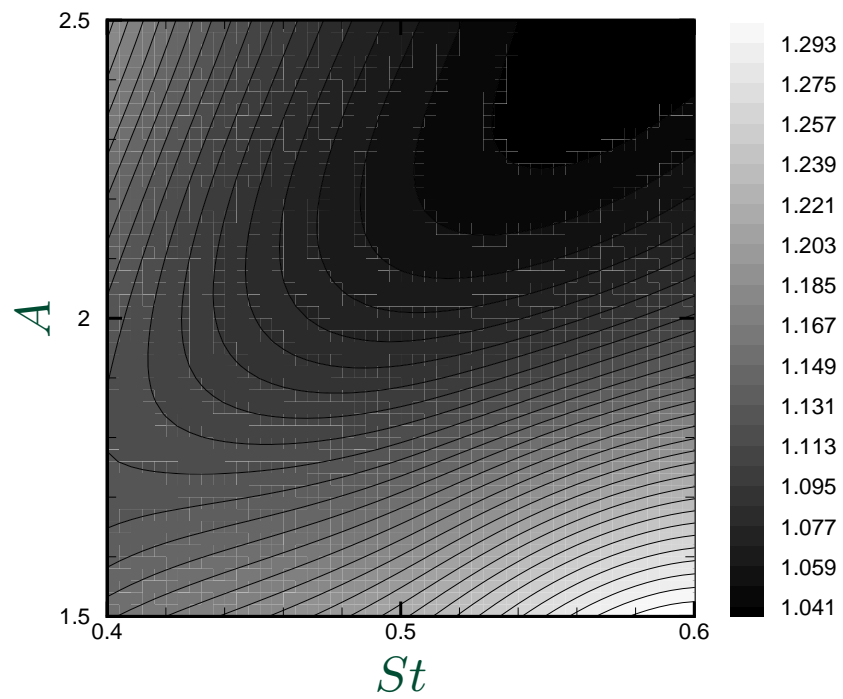
- Model objective function :

$$m = \langle \widetilde{C}_D(t) \rangle_T = \frac{1}{T} \int_0^T \left( a_0(t)N_0 + \sum_{i=N+1}^{N+M} a_i(t)N_i \right) dt.$$

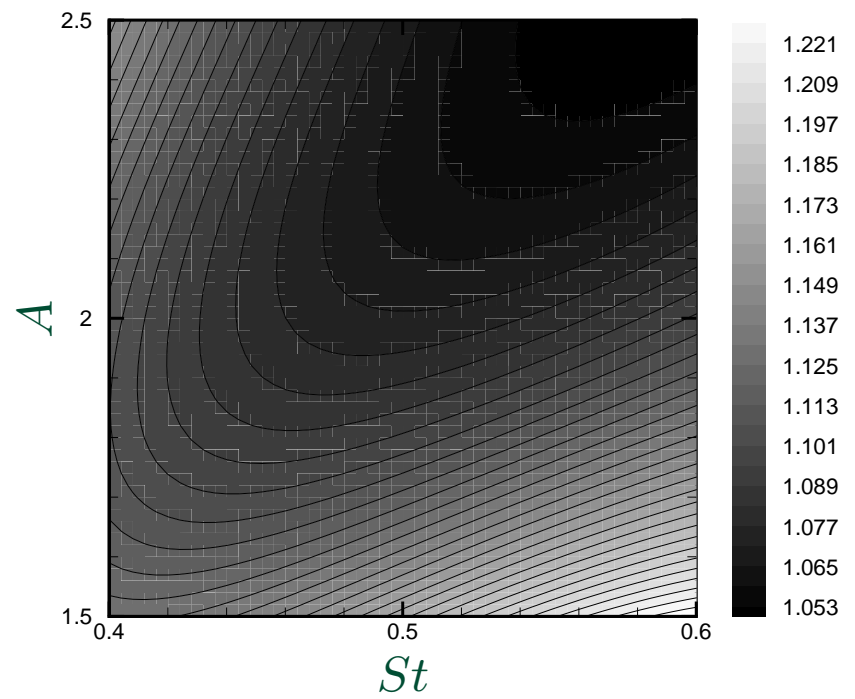


- Comparison of real drag coefficient  $C_D$  (symbols) and model function  $\tilde{C}_D$  (lines) at the design parameters.





(a) Real objective function  $\mathcal{J}$



(b) Model objective function  $m$

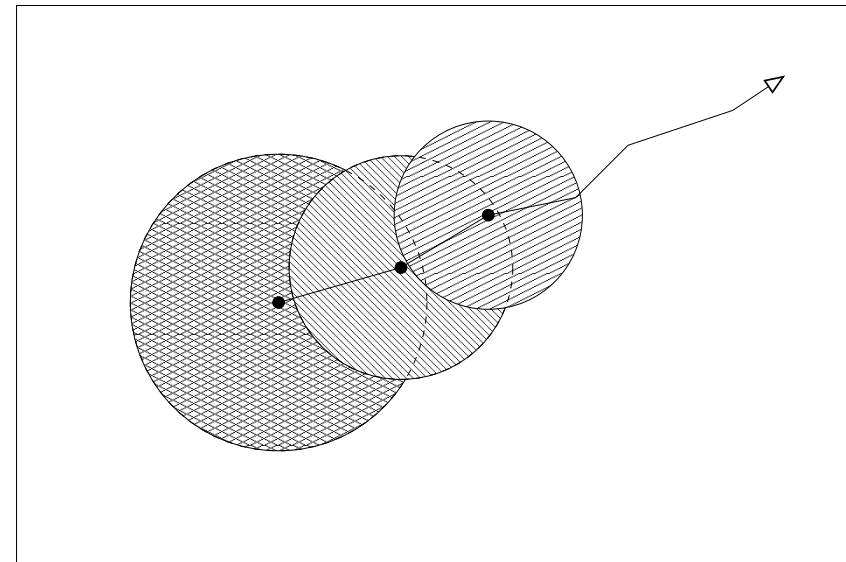
Fig. : Comparison of the real and the model objective functions associated to the mean drag coefficient.



Range of validity of the POD ROM restricted to a vicinity of the design parameters

Objective : Use ROMs to solve large-scale optimization problems with assurance of :

1. Automatic restriction of the range of validity
2. Global convergence



Solution

- Embed the POD technique into the concept of trust-region methods :  
**Trust-Region Proper Orthogonal Decomposition (Fahl, 2000)**

---

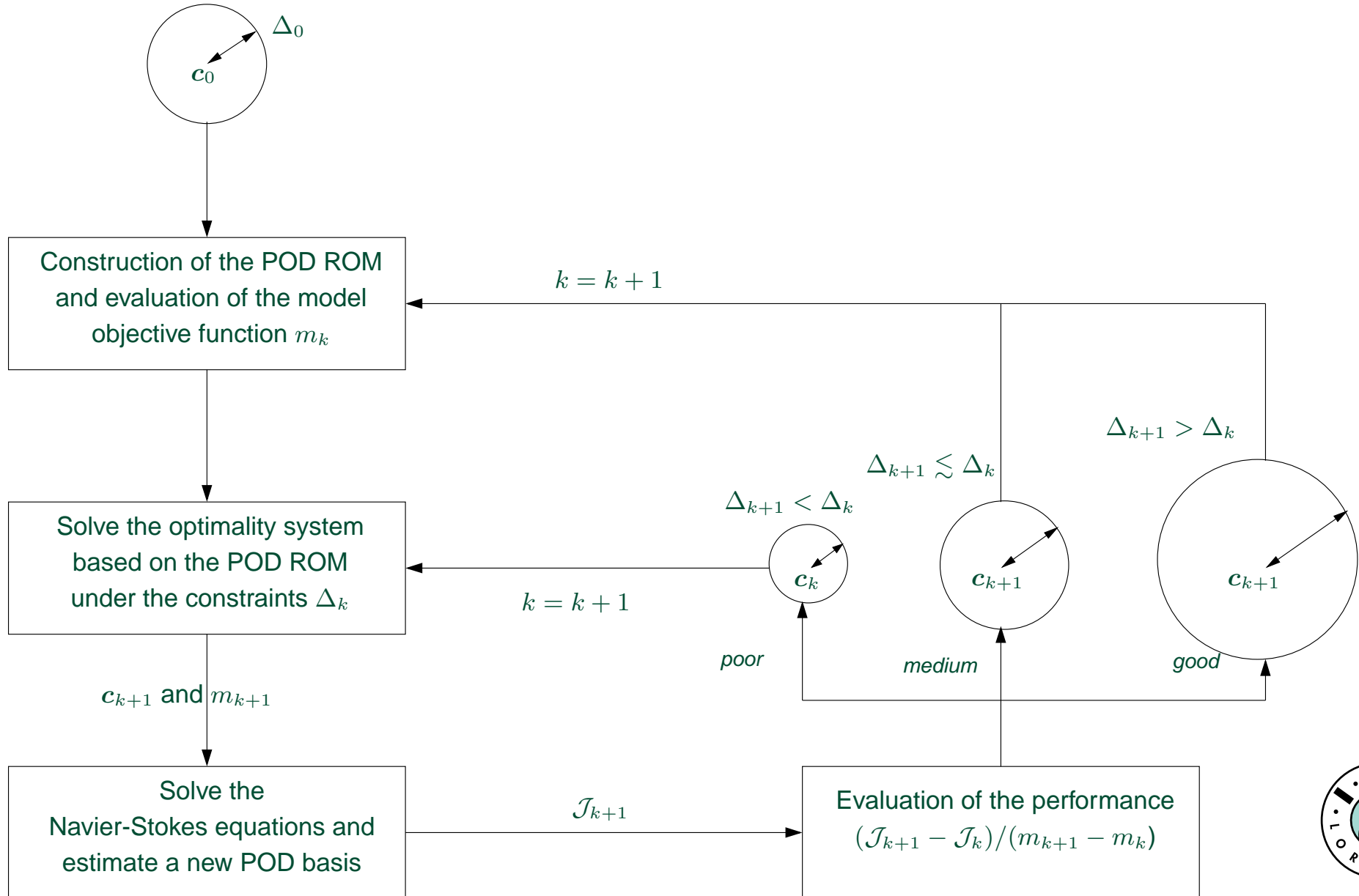
Conn, A.R., Gould, N.I.M. et Toint, P.L. (2000) : Trust-region methods. *SIAM, Philadelphia.*



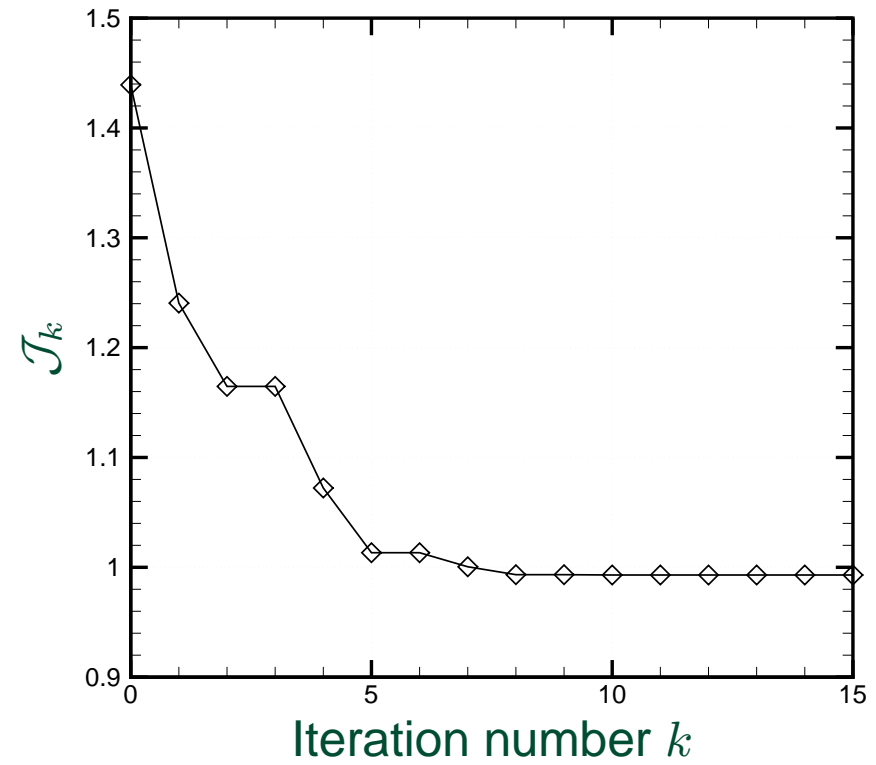
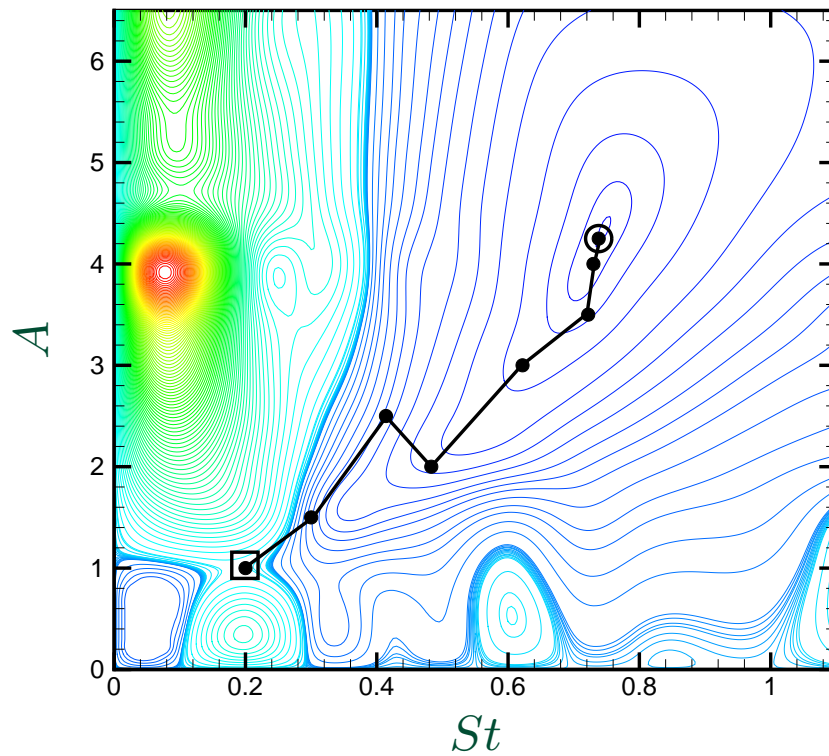
# Trust-Region Proper Orthogonal Decomposition (TRPOD)

## Algorithm

Initialization :  $c_0$ , Navier-Stokes resolution,  $\mathcal{J}_0$ .  $k = 0$ .



Initial control parameters :  $A = 1.0$  et  $St = 0.2$



Optimal control parameters :  $A = 4.25$  et  $St = 0.74$

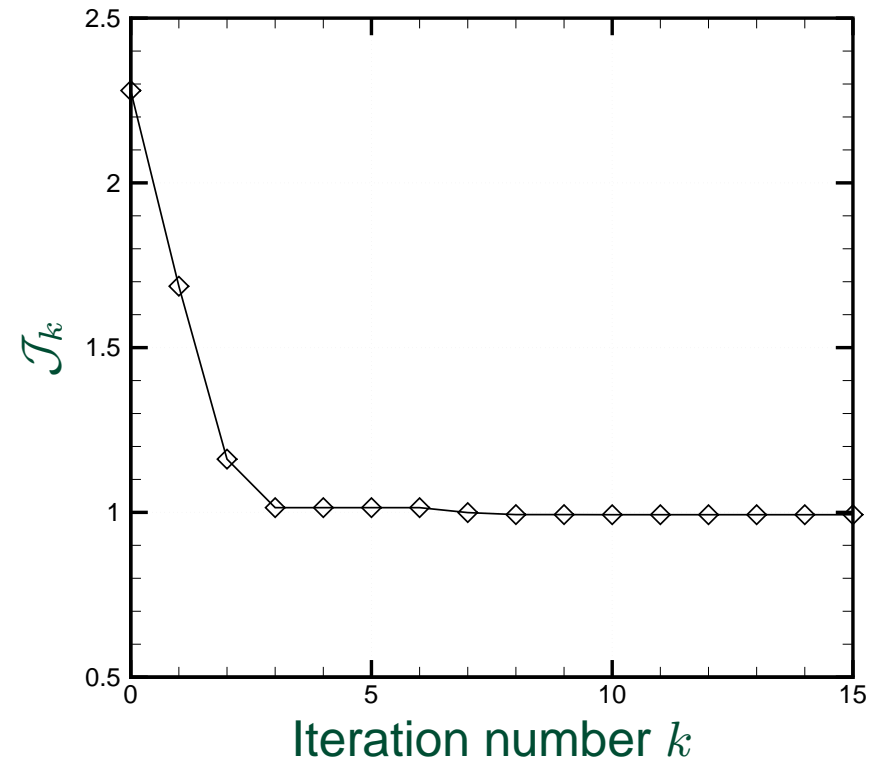
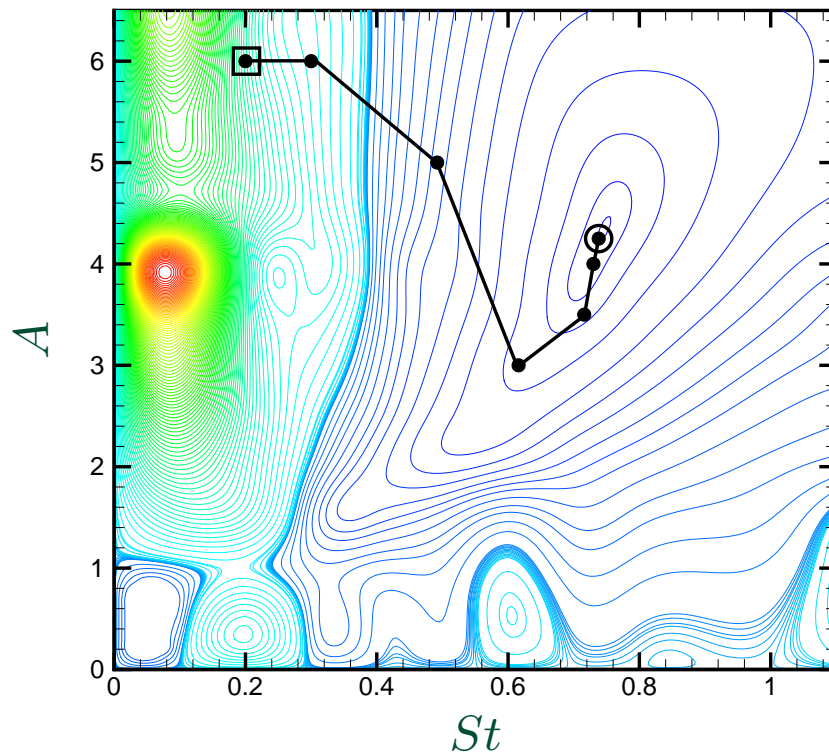
Mean drag coefficient :  $\mathcal{J} = 0.993$

8 resolutions of the Navier-Stokes equations





Initial control parameters :  $A = 6.0$  et  $St = 0.2$



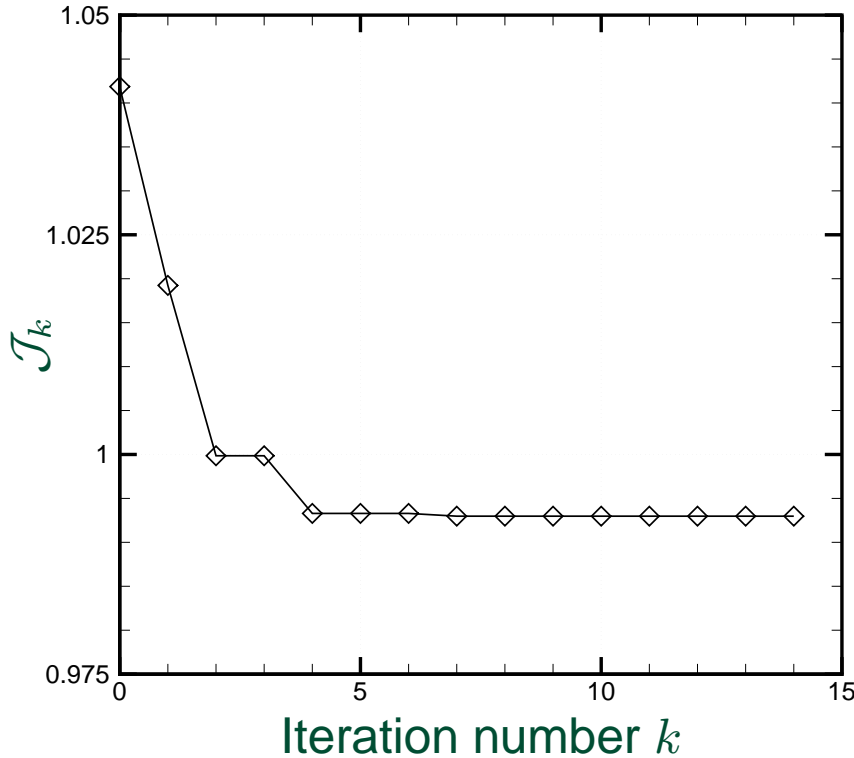
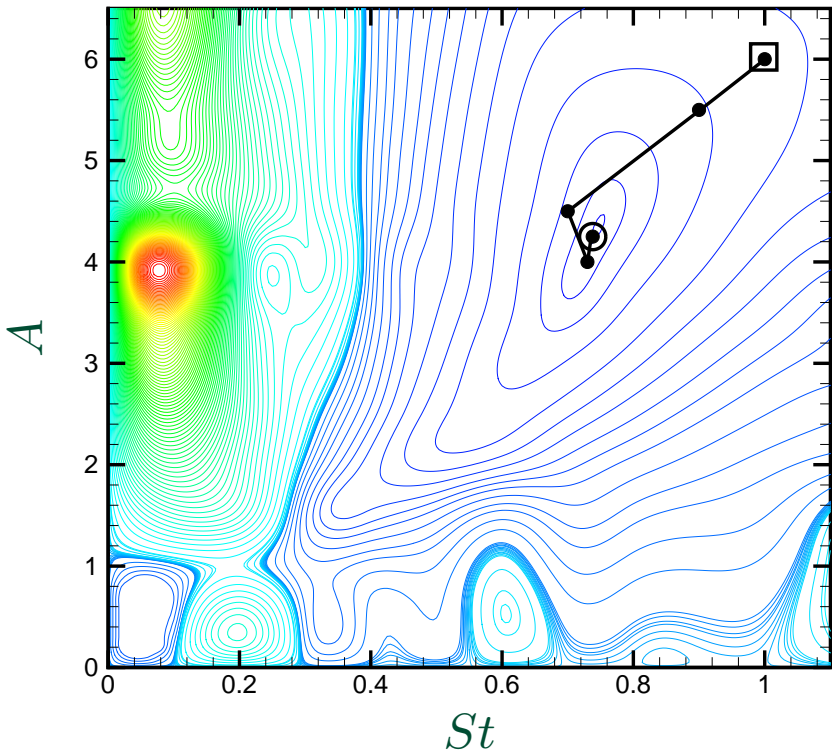
Optimal control parameters :  $A = 4.25$  and  $St = 0.74$

Mean drag coefficient :  $\mathcal{J} = 0.993$

6 resolutions of the Navier-Stokes equations



Initial control parameters :  $A = 6.0$  et  $St = 1.0$



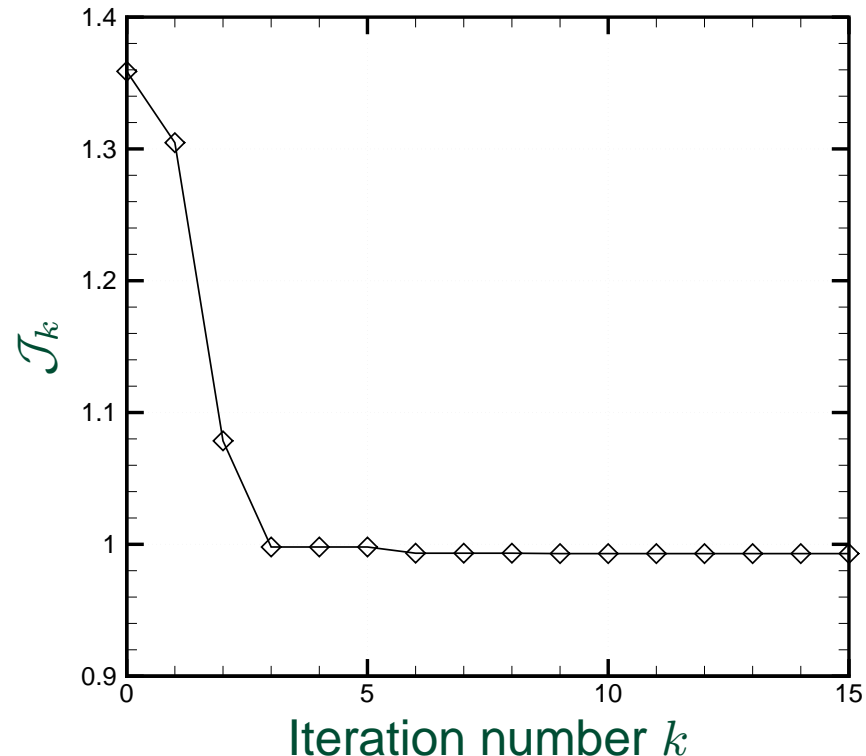
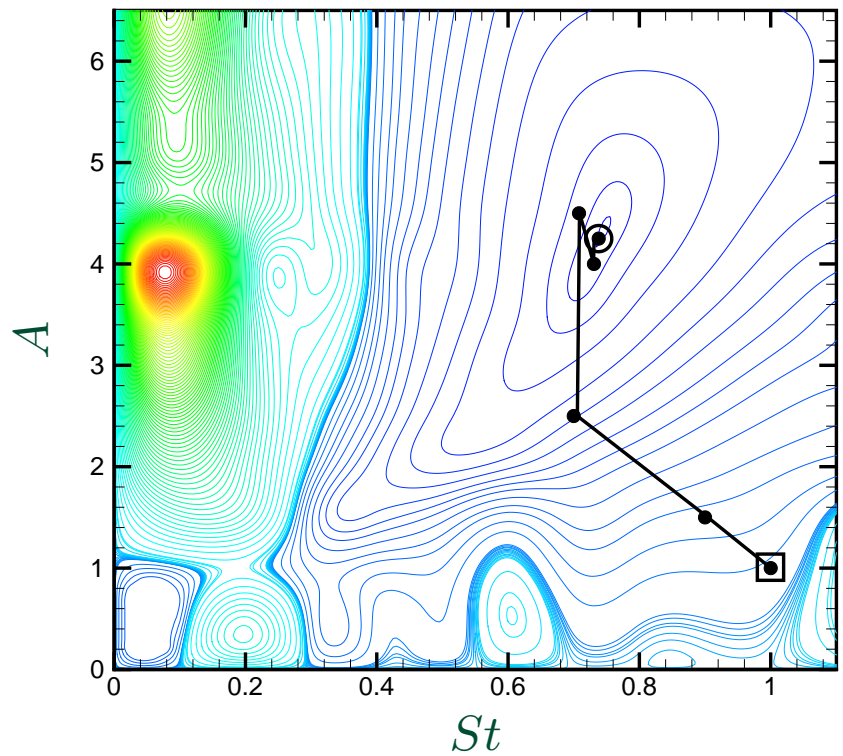
Optimal control parameters :  $A = 4.25$  and  $St = 0.74$

Mean drag coefficient :  $\mathcal{J} = 0.993$

4 resolutions of the Navier-Stokes equations



Initial control parameters :  $A = 1.0$  et  $St = 1.0$



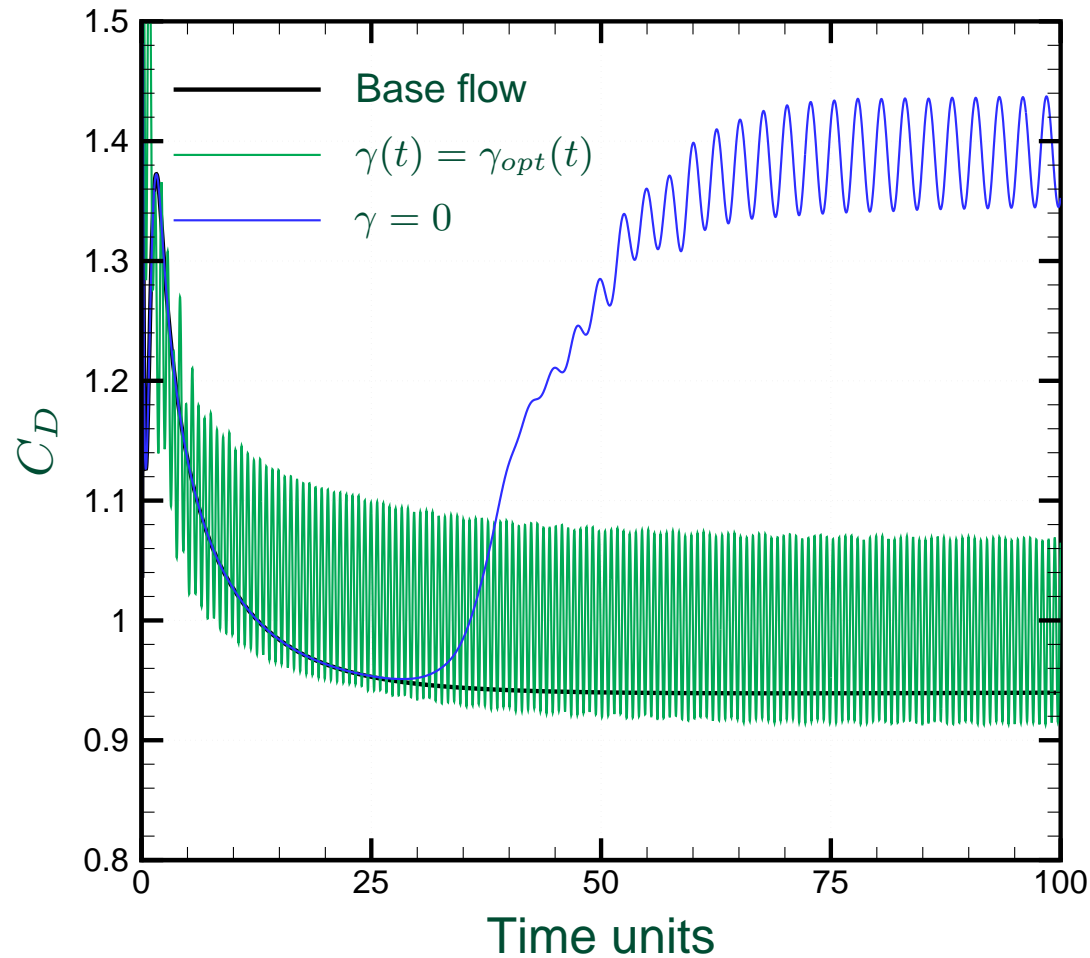
Optimal control parameters :  $A = 4.25$  and  $St = 0.74$

Mean drag coefficient :  $\mathcal{J} = 0.993$

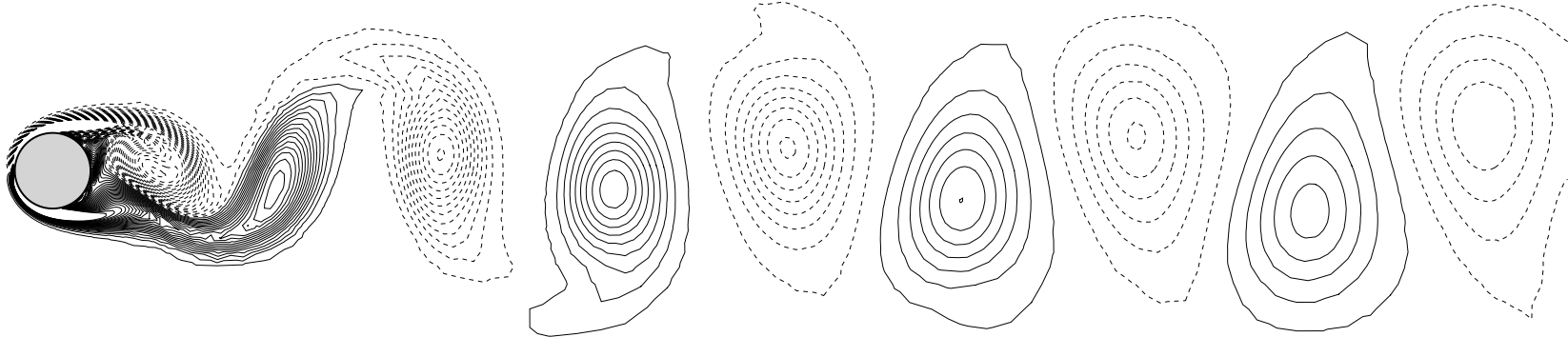
5 resolutions of the Navier-Stokes equations



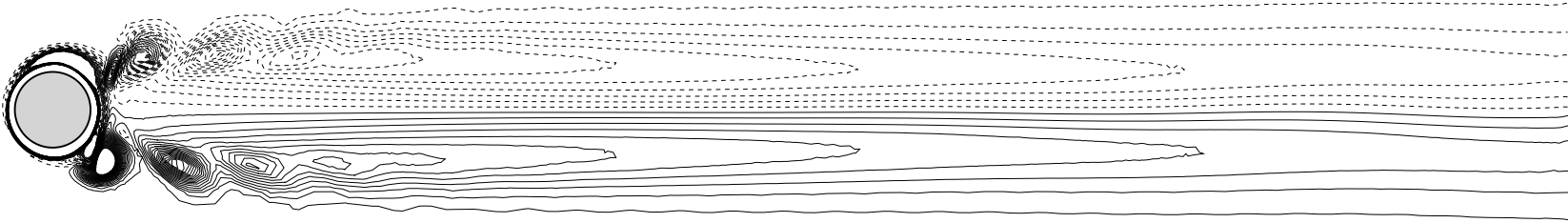
- Optimal control law :  $\gamma_{opt}(t) = A \sin(2\pi St t)$  avec  $A = 4.25$  et  $St = 0.74$



- Relative drag reduction of 30% ( $\mathcal{J}_0 = 1,4 \Rightarrow \mathcal{J}_{opt} = 0,99$ )



Uncontrolled flow,  $\gamma = 0$ .



Controlled flow,  $\gamma = \gamma_{opt}$ .

Fig. : Iso-values of vorticity  $\omega_z$ .

Controlled flow : near wake strongly unsteady, far wake (after 5 diameters) steady and symmetric → steady unstable base flow



- Optimal control of NSE by He *et al.* (2000) :
  - ⇒ 30% drag reduction for  $A = 3$  and  $S_t = 0.75$ .
- Optimal control POD ROM by Bergmann *et al.* (2005) with no reactualization of the POD ROM :
  - ⇒ 25% drag reduction for  $A = 2.2$  and  $S_t = 0.53$ .
  - Reduction costs compared to NSE :
    - CPU time : 100
    - Memory storage : 600

but no mathematical proof concerning the Navier-Stokes optimality.
- TRPOD (this study) :
  - ⇒ More than 30% of drag reduction for  $A = 4.25$  and  $S_t = 0.738$ .
  - Reduction costs compared to NSE :
    - CPU time : 4
    - Memory storage : 400

but global convergence.

↪ "Optimal" control of 3D flows becomes possible !



# Conclusions and perspectives

- Conclusions on TRPOD
  - Important relative drag reduction : more than 30% of relative drag reduction
  - **Global convergence** : mathematical assurance that the solution is identical to the one of the high-fidelity model
  - TRPOD compared to NSE  $\Rightarrow$  important reduction of numerical costs :
    - $\hookrightarrow$  Reduction factor of the CPU time : **4**
    - $\hookrightarrow$  Reduction factor of the memory storage : **400**

## "OPTIMAL" CONTROL OF 3D FLOWS POSSIBLE BY POD ROM

- Perspectives
  - Test mode interpolations for controlled flows (Morzynski and Tadmor's talks, GAMM 2006)
  - Test other reduced basis method than classical POD
    - Centroidal Voronoi Tessellations (Gunzburguer, 2004) : "intelligent" sampling in the control parameter space
    - Model-based POD (Willcox, 2005) : modify the definitions of the POD modes
  - Optimal control of the channel flow at  $Re_\tau = 180$

